

SeaGlass

JUPITER ISLAND



Nestled between the Atlantic Ocean and the Intracoastal Waterway on Jupiter Island, in the Village of Tequesta, SeaGlass captivates the imagination with its sleek contemporary architecture. These 21 discerning residences will deliver uncompromising luxury in a gated sanctuary, surrounded by Jupiter Island's pristine natural environment. Each exquisite residence maximizes panoramic Ocean-to-Intracoastal vistas, spanning up to 5,323 square feet of living area. These captivating homes will immerse residents in an unparalleled atmosphere of relaxation and pleasure, while delivering an exceptional level of design and detail.







Life on the beach is a luxury with countless benefits. Whether you take in the views from your private terrace or immerse yourself in the warm, refreshing coastal waters, you'll always feel the ocean's calming influence.



Enveloped by nature's bounty, life at SeaGlass is sure to be comfortably serene. Surrounded by Coral Cove Park, visions of breathtaking beauty will become the norm.





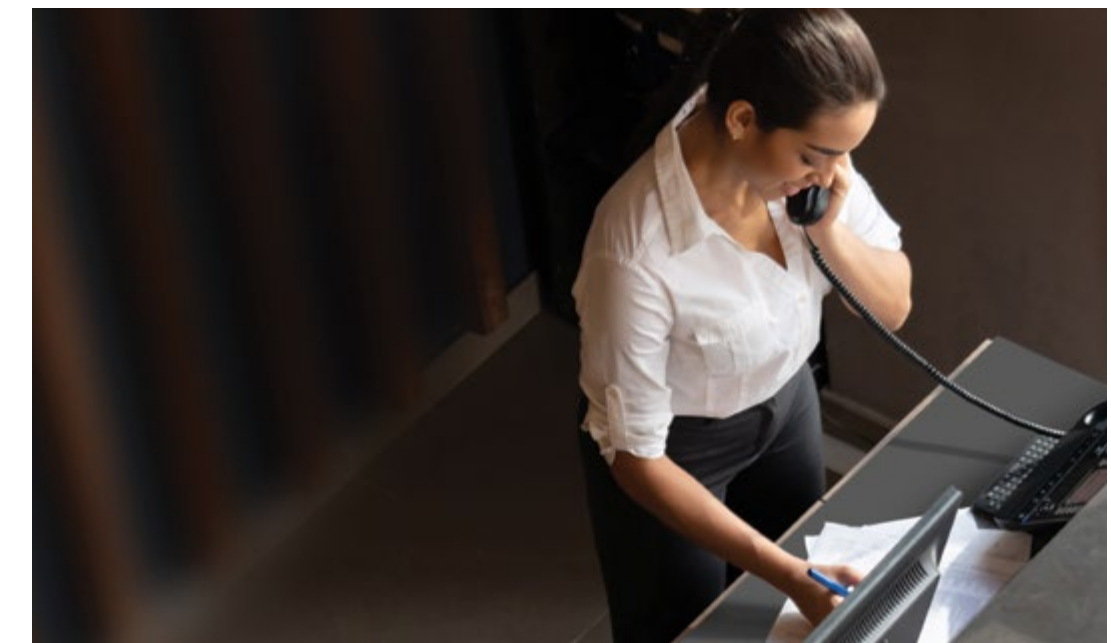
Amazing sunrises and stunning sunsets. This gated community will take advantage of the unprecedented 360° views of the Atlantic Ocean and Intracoastal Waterways through floor-to-ceiling walls of glass and expansive private terraces.







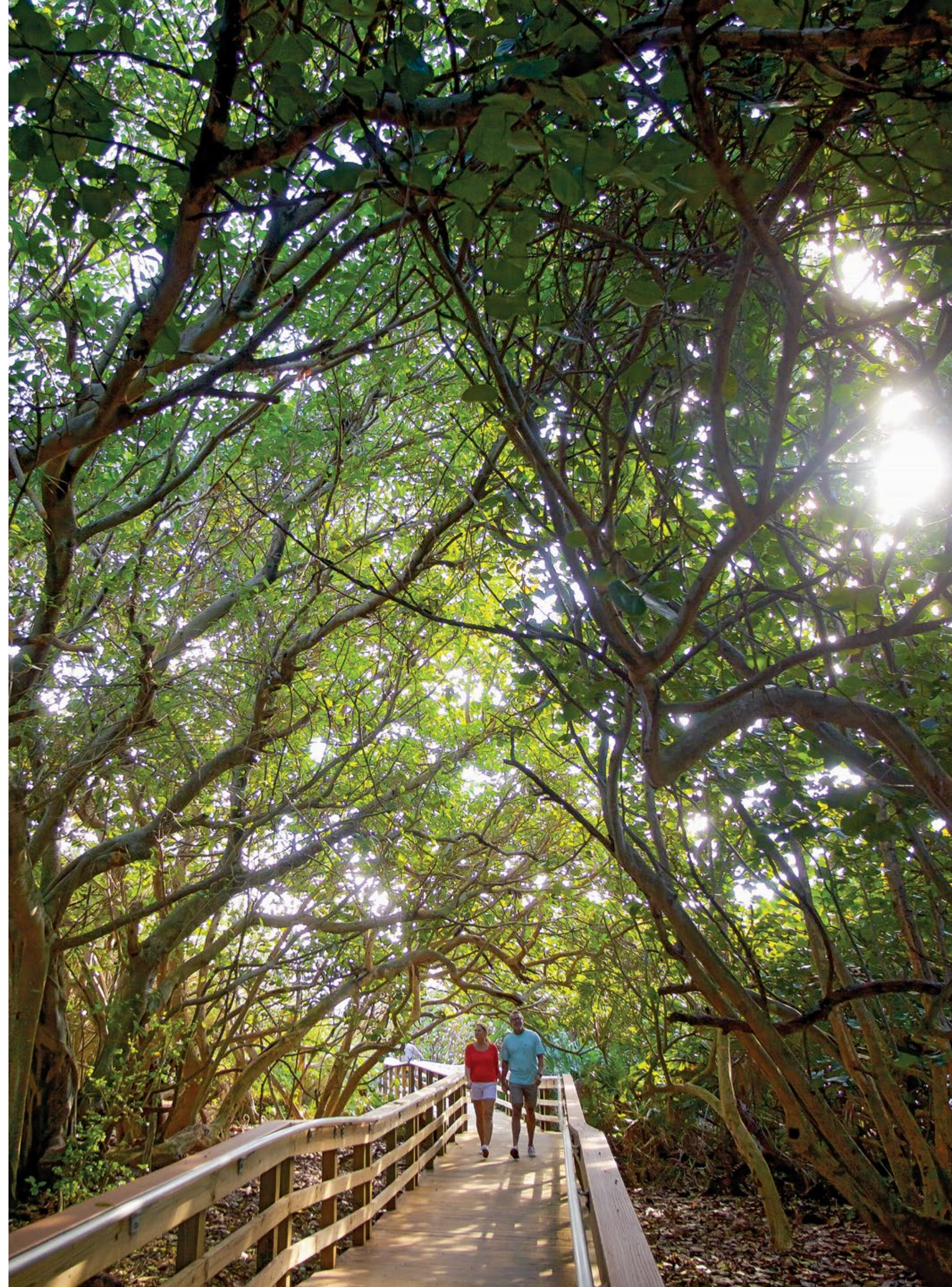
ARTIST'S CONCEPT



This unique island retreat blends beautifully with the natural surroundings through exceptional attention to detail. Full-time staff will be on hand to facilitate your arrival and lifestyle requirements.



Immerse yourself in the colors of nature's bounty. Experience the rolling greens of this golf-rich area, the vibrant blue skies and the mesmerizing azure ocean waters. This is the palette of life, the way it was meant to be experienced.



Be it the resort-style pool and deck, whirlpool spa, yoga lawn, the beach or aboard a boat, this is relaxation taken to an art form.

When life balance requires a bit more exertion, a state-of-the-art fitness facility and endless opportunity for outdoor activities awaits.



ARTIST'S CONCEPT



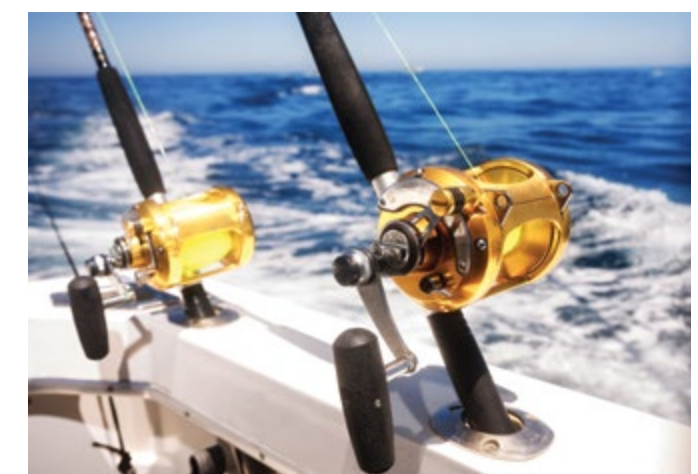
Bridge Road is the iconic northern gateway to Jupiter Island and the island's most photographed and painted site.

Here, moments are transformed into lasting memories.
A place where every day adventures unfold in a spectacular
natural setting. Where family and friends will celebrate
the simple pleasures created from a spontaneous lifestyle.

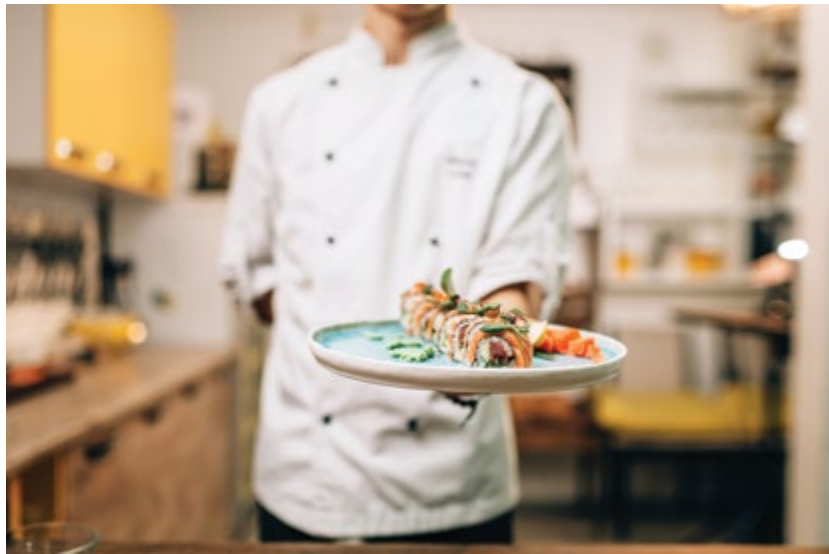




The Jupiter Inlet is the gateway to the Atlantic and a port of call for avid sportsman, divers and yachtsman. A wide array of yacht clubs, marinas and charter operations are just minutes from SeaGlass along the Intracoastal Waterway. With The Bahamas a mere 55 miles away, island hopping and deep sea fishing are just a short day trip away.



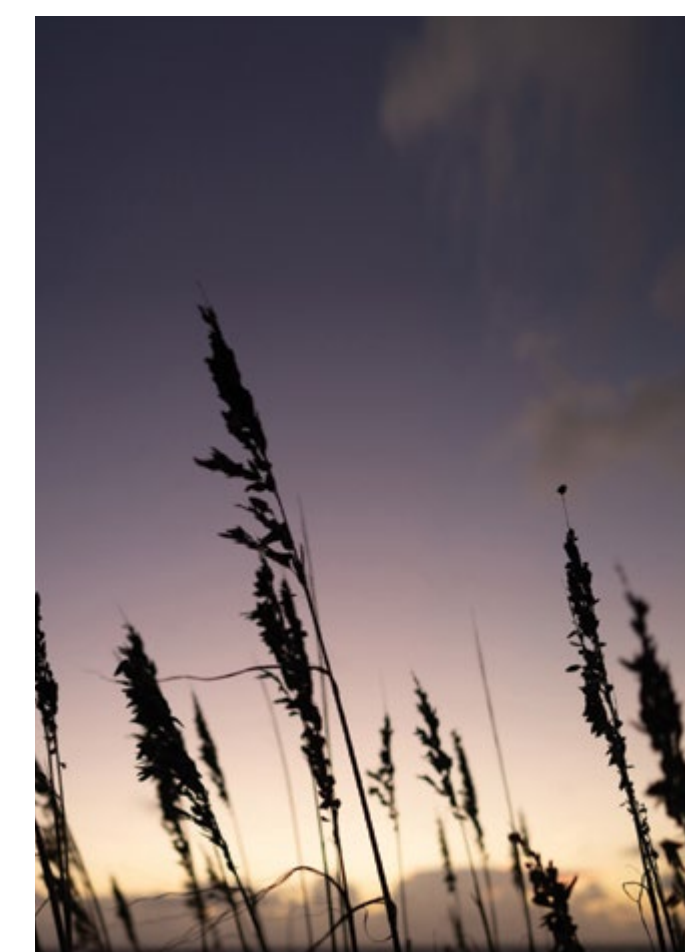




Venture minutes from home to experience the coastal destination of Jupiter, Florida. A waterfront locale where world-class culinary delights meld with a sophisticated, yet laid-back lifestyle. A haven for cherished privacy and healthy living.



This is a special corner of the world where celebrities, leaders of industry and sports legends effortlessly blend into the local fabric.







Life on a tropical island comes with the expectation of privacy and seclusion. SeaGlass is no exception but this unique location is just minutes from world-class shopping, parks, spas, events and a vibrant arts community.



FONTAINEBLEAU'S LEGACY OF LUXURY

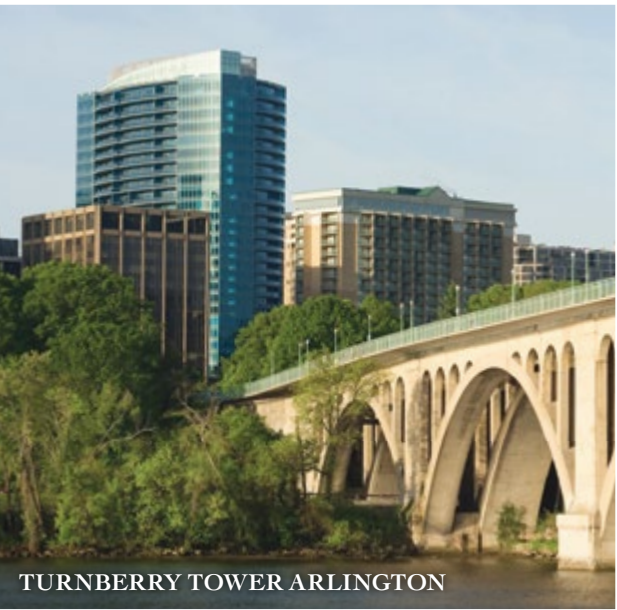


HALF A CENTURY OF EXPERIENCE. During its fifty-year history as a leading real estate development and property management company, Fontainebleau Development has refused to conform to traditional genres. The company’s diverse residential, hospitality, retail and commercial projects valued at more than \$10 billion have received accolades for revolutionizing the living, working, leisure and shopping habits of millions of people across the country. From Turnberry Ocean Colony, Porto Vita, Aventura Mall, Fontainebleau Hotel in Miami Beach and Turnberry Isle Country Club in Aventura, to signature properties in Las Vegas, Washington D.C. and the Bahamas, Fontainebleau has always been known for superb quality and impeccable service. SeaGlass has raised the bar on oceanfront, private living once again.

“At Fontainebleau, perfection is a point of pride and unless we are proud of it, we will not build it.”

—Jeffrey Soffer
CEO, Fontainebleau Development

FONTAINEBLEAU
DEVELOPMENT





Only 3.6 miles long, the Ocean-to-Intracoastal barrier island of Jupiter Island is known for the highest per capita income in the United States. A secluded sanctuary on Florida's east coast, the island is a haven for celebrities and elite travelers who appreciate the unique combination of an unspoiled natural habitat and the understated, relaxed environment.

Palm Beach International Airport (PBI) offers non-stop service to over 30 destinations in the US and the Caribbean. Additionally, there are several private jet centers (FBOs) conveniently located nearby. Witham Field (KSUA) in Stuart and North Palm Beach County General Aviation Airport (F45) are a mere 20 minutes away, providing private air access outside of the Presidential restricted zone in Palm Beach to the south. The area is also home to several marinas with facilities designed to accommodate larger yachts.





SeaGlass

JUPITER ISLAND

1500 Beach Road, Tequesta, Florida 33469 | SeaGlassJupiterIsland.com | 561-575-1446

We are pledged to the letter and spirit of the US Policy for achievement of equal housing opportunity throughout the nation. We encourage and support an affirmative advertising and marketing program in which there are no barriers to obtaining housing because of race, color, religion, sex, handicap, familial status or national origin. All real estate advertised herein is subject to the US Federal Fair Housing Act of 1968 which makes it illegal to make or publish any advertisement that indicates any preference, limitation, or discrimination based on race, color, religion, sex, handicap, familial status, or national origin. Please check with your local government agency for more information.

The sketches, renderings, pictures and illustrations are proposals only and the developer reserves the right to modify, revise or withdraw any or all of the same at its sole discretion without notice. The renderings illustrate and depict a lifestyle, however, amenities, features and specifications are subject to change without notice. All information is deemed reliable but is not guaranteed and should be independently verified.

Note: Plan materials and specifications are subject to architectural and other revisions at the sole discretion of the developer, builder or architect, or as may be requested by law. Floor plans may not be to scale. Any furniture, appliances or decorator ready items depicted herein are shown for artistic and illustrative purposes only and are not included in the purchase and sale of the residence. Stated dimensions are measured to the exterior boundaries of the exterior wall and the center line of the interior demising walls and, in fact, vary from the dimensions that would be determined by using the description and definition of the "unit" set forth in the declaration (which generally only includes the interior airspace between the perimeter walls and excludes interior structural components). Additionally, measurements of rooms set forth on any floor plan are generally taken at the greatest points of each given room (as if the room were a perfect rectangle), without regard for any cut outs. Accordingly, the area of the actual room will typically be smaller than the product obtained by multiplying the stated length times the width. All dimensions are approximate and all floor plans and development plans are subject to change.

ORAL REPRESENTATIONS CANNOT BE RELIED UPON AS CORRECTLY STATING REPRESENTATIONS OF THE SELLER. FOR CORRECT REPRESENTATIONS, MAKE REFERENCE TO THIS BROCHURE AND TO THE DOCUMENTS REQUIRED BY SECTION 718.503, FLORIDA STATUTES TO BE FURNISHED BY A SELLER TO A BUYER OR LESSEE. All dimensions, features, and specifications are approximate and subject to change without notice. Brokers warmly welcomed.



SeaGlass

JUPITER ISLAND